



# RESEARCH WEEK 2023

*April 17-20*



**Jerry Falwell Library**

# SCHEDULE OVERVIEW

## MONDAY, APRIL 17

8:30 a.m.–3:30 p.m.	<b><i>Jerry Falwell Library, Upper Atrium and Carter Learning Commons</i></b> Registration and Poster Set-Up
10:15–11:30 a.m.	<b><i>Jerry Falwell Library, Terrace Conference Room</i></b> Welcome Reception and Keynote Speaker (See page 4)
Noon–3 p.m.	<b><i>JFL Carter Learning Commons</i></b> Basic Poster Sessions (See pages 5–7 for list of presenters)
Noon–4 p.m.	<b><i>JFL Classrooms</i></b> Theoretical and Creative/Artistic Oral Presentations (See pages 8–10 for list of presenters)

## TUESDAY, APRIL 18

8:30 a.m.–3:30 p.m.	<b><i>Jerry Falwell Library, Upper Atrium and Carter Learning Commons</i></b> Registration and Poster Set-Up
9:45–11 a.m.	<b><i>DeMoss Grand Lobby</i></b> Aviation Safety Forum, Safety Culture Keynote
9:45 a.m.–5 p.m.	<b><i>DeMoss Grand Lobby</i></b> Aviation Safety Forum, Student Presentations
10:00 a.m.–4 p.m.	<b><i>JFL Classrooms</i></b> Applied and Textual/Investigative Oral Presentations (See pages 11–16 for list of presenters)
12:45–1:15 p.m.	<b><i>DeMoss Grand Lobby</i></b> Aviation Safety Forum, Safety Culture Discussion
1–4 p.m.	<b><i>JFL Carter Learning Commons</i></b> Theoretical Poster Session (See pages 1618 for list of presenters)



# SCHEDULE OVERVIEW

## WEDNESDAY, APRIL 19

8:30 a.m.–3:30 p.m.	<b><i>Jerry Falwell Library, Upper Atrium and Carter Learning Commons</i></b> Registration and Poster Set-Up
9:20 a.m.–4:05 p.m.	<b><i>DeMoss Grand Lobby</i></b> Aviation Safety Forum, Student Presentations
9:25–9:50 a.m.	<b><i>DeMoss Grand Lobby</i></b> Aviation Safety Forum, Safety Leadership Keynote
10 a.m.–4 p.m.	<b><i>JFL Classrooms</i></b> Basic Oral Presentations (See pages 20 for list of presenters)
10:30–11:15 a.m.	<b><i>DeMoss Grand Lobby</i></b> Aviation Safety Forum, Safety and Faith Panel
Noon–4 p.m.	<b><i>School of Music</i></b> Performing Arts Presentations (See pages 21–22 for list of presenters)
1–4 p.m.	<b><i>JFL Carter Learning Commons</i></b> Creative/Artistic, Textual/Investigative, and Applied Poster Session (See pages 22–23 for list of presenters)

## THURSDAY, APRIL 20

8:30 a.m.–3:30 p.m.	<b><i>Jerry Falwell Library, Upper Atrium and Carter Learning Commons</i></b> Registration and Poster Set-Up
10 a.m.–1 p.m.	<b><i>JFL Carter Learning Commons</i></b> Applied Poster Session (See pages 24–27 for list of presenters)
10 a.m.–4 p.m.	<b><i>JFL Classrooms</i></b> Textual/Investigative Oral Presentations (See pages 27–30 for list of presenters)
12:30–1 p.m.	<b><i>Jerry Falwell Library, Upper Atrium</i></b> 3MT Registration



# SCHEDULE OVERVIEW

## THURSDAY, APRIL 20

1 p.m.

***Jerry Falwell Library, Terrace Conference Room***

**3MT Competition**

*(See pages 30–32 for list of presenters)*

1–7 p.m.

***Jerry Falwell Library, Terrace***

**Poster Pick-Up**

### EVENT LOCATIONS:

Active Learning Classroom – JFL 171

Terrace Conference A – JFL 001A

Terrace Conference B – JFL 001B

Scholars Lounge – JFL 380

Classrooms – JFL 170 A, B, C

JFL Conference – JFL 300





## KEYNOTE SPEAKER PRESENTER SPOTLIGHT



Dr. Roger Schultz came to Liberty University in 2002 as Professor of History and Chair of the History Department. Since 2006, he has served as Dean of the College of Arts and Sciences. He is a graduate of Bemidji State University, Trinity Evangelical Divinity School, and the University of Arkansas, where he received a Ph.D. in History. He is a member of the Phi Beta Kappa Society.

Prior to coming to Liberty University, Dr. Schultz taught at Virginia Interment College, the University of Arkansas, and Oak Hills Christian College. He loves the classroom and the teaching mission of Liberty University. The opportunity to mentor students, encourage spiritual growth, and prepare students for their callings is, he argues, a precious responsibility.

Dr. Schultz specializes in American religious history. He teaches courses on American Christian Heritage, the American Revolution, and Jonathan Edwards. His research interests include religion in the Revolutionary era, American religious revivals, and American Fundamentalism. More recently, his research has focused on local and Virginia religious history.

He has been active for the last eight years with Liberty University historical and archaeological projects at New London. University properties include Mead's Tavern and the Bedford Alum Springs Hotel, and these have provided outstanding opportunities for research and student projects.

His articles have appeared in numerous publications, including World, Human Events, Fides et Historia, Charisma, Contra Mundum, Faith for All Life, Faith and the Academy, and The Banner of Truth. His work has been published in Spanish and Hungarian.

Dr. Schultz is an ordained minister and frequently preaches in local churches and speaks at conferences. He enjoys hunting and telling elaborate stories of his boyhood days in northern Minnesota. Roger and Ann Schultz have 9 children and 24 grandchildren. All of the Schultz children are graduates of Liberty University.

# MONDAY, APRIL 17

Noon–3 p.m.

## Carter Learning Commons

Basic Poster Session: Undergraduate and Graduate

- › **Ethan Goodman, Erin Hanley, Joshua Rose, Matthew Vuncannon, Noah Kurtz**  
Assessing Local Microhabitat Characteristics of Wood Ducks (Aix sponsa) at Briery Creek WMA to Develop a Predictor Model of Species Abundance in the Camp Hydaway
- › **Faith Midkiff, Abigail Piddock, Leah Anderson, Mary-Elizabeth Tallman, Savanna Wortman**  
A Survey of Possible Microbial Causes of Aquatic Turtle Shell Rot
- › **Lynza Osorio**  
Presumptive Color Testing of Aspirin Using the Marquis Reagent
- › **Abigail McLaughlin**  
An in-vitro Examination of the Effects of Enterodiol on Glucose Disposal in Human Adipocytes
- › **Mary-Clark Matthews, Alexis Ramerth, McKayla Guillory**  
Molecular Data Confirm that All Modern Loons are Part of the Same Created Kind
- › **McKayla Guillory, Alexis Ramerth, Mary-Clark Matthews**  
New Morphological Data Reveal that Fossil Loons are Included in the Loon Kind
- › **Stephanie McLean, Hunter Pratt, Karl Voight, Quinon Gresham, Rebekah Hepner**  
Examining How Roundup Affects the Growth, Development, and Survivability of Stream Biota
- › **Megan Bones**  
Evaluation of Enterolactone for the Treatment and Prevention of Type-2 Diabetes
- › **Shelby Jampole, Hannah Violette**  
Identification of Small Bioactive Molecules for the Treatment and Prevention of Type-2 Diabetes
- › **Caroline Wethington, Aaliyah Craig, Abigail Piddock, Bethany Latwinski, Brooke Chapple, Emma Harris, Josiah Harris, Kyra Goyette, Nyle Shank**  
Effects of Seasonality on the Infection Intensity of the Amphibian Skin Pathogen Batrachochytrium dendrobatidis on Crayfish
- › **Anna King, John Pryor, Serratt Nong**  
Effect of Tetracycline Derivatives on Metastasis in a Murine Mammary Tumor Model
- › **Noah Kurtz**  
Assessment of Queensnakes and Northern Watersnakes Living in a Trashy Creek



# MONDAY, APRIL 17

Noon–3 p.m.

## Carter Learning Commons

Basic Poster Session: Undergraduate and Graduate

- › **Wilmar Janusz, Abbye Morgan, Chloe Vernon**  
Synthesis of  $\text{Mn}(\text{CO})_3[1,2\text{-C}_5\text{H}_3(\text{CO}-(\text{C}_4\text{H}_3\text{S}))_2]$  and X-ray Crystallography of  $\text{Re}(\text{CO})_3[1,2\text{-C}_5\text{H}_3(\text{CO}-(\text{C}_4\text{H}_3\text{S}))_2]$
- › **Levi Mailloux, Bradley Maddox**  
Structural and Functional Analysis of the Yeast Glucose Transporter Hxt1
- › **Asia Eskaros, David Kicinski, Daniel Leonard, Anna Osborn, Hannah Thomas**  
The Effect of Bisphenol C on Danio Rerio Immune Development
- › **Margaret Tyler, Megan McCoy**  
Time Dependent Selective Esterification of Free Fatty Acids for Algae Biofuel Testing
- › **Haeun Tae, Jaqueline Padilla, Morgan McDowell**  
The Role of the Tail Domain of the Yeast Cell Surface Receptors Rgt2 and Snf3 in Glucose Signaling
- › **Fanchen Ye**  
Molecular Data Confirm the Presence of Multiple Landfowl Kinds
- › **Jack Gregory**  
New Analyses Substantiate Previous Claims that All Horses Form a Unique Created Kind
- › **Genesis Schat, Madelyn Sedlachek**  
Activation of Nrf2 Pathway by Natural Products
- › **Tabitha Hutchison, Hannah Stein, Jaden Seman**  
Current Status of Fungal and Viral Infections of the Peaks of Otter Salamander and Other Amphibians in Virginia
- › **Carleigh Warsing**  
SCP1 Mediates pH Adaptation Through the SREBP Regulatory Pathway in *C. Neoformans*
- › **Sarah Bingham, Chinelo Emmanuela Nnadozie, Destiny Latia, Keishara Braynen**  
Novel Tandem Reaction to Synthesize 2-Formalphenylboronic Acids
- › **Destiny Latia, Keishara Braynen**  
Column Chromatography of an Oxepine Synthesized from Meldrum's Acid
- › **Sally Hess**  
Novel Plant Peroxidase Investigation for Use in Various Biochemical and Practical Applications

# MONDAY, APRIL 17

Noon–3 p.m.

## Carter Learning Commons

Basic Poster Session: Undergraduate and Graduate

- › **Kathryn Brookhart, Hanna Dutt**  
The Use of Molecular Beacon siRNA to Induce Degradation of SARS CoV-2 mRNA in Infected Cells
- › **Efosa Osayamwen, Nathaniel Spears, Dr. Jeffrey Houghton, Ph.D.**  
Determining the Influence of Diet and ERS on the Structure-Function of Relationship in the Kidney
- › **Lillianne Bartone**  
Characterization of a SAS3 Homolog in the Human Pathogenic Yeast *Cryptococcus Neoformans*
- › **Julia Spiotta, Kezia Reji Thomas**  
Studies Towards the Development of a High Throughput Assay for the Analysis of ABHD2 Inhibition
- › **Sierra Hall, Alexis Ramerth**  
Cafestol and Quinic Acid as Novel Agents for the Attenuation of Type-2 Diabetes
- › **Elijah Gocotano, Hannah Klose**  
Inhibiting Nitroso Related Methylation of Guanine Using Dietary Supplements and Flavonoids
- › **Felice Kho, Phoebe Bridy, Yuqi Wang**  
Examination of Putative Histone Acetyltransferases in *Cryptococcus Neoformans*
- › **Cheyenne Brooks**  
CORT Level Comparisons Between Allopatric and Sympatric Habitats in *Plethodon Hubrichti*
- › **Luke Allen, Joseph Redding, Joshua Kim, Micah Lewis**  
Detection of PFOA Using Molecularly Imprinted Polymers
- › **Kezia Reji Thomas, Julia Spiotta**  
Novel Carbamate Exchange Reaction for the Synthesis of Peripherally Selective Endocannabinoid Enzyme Inhibitors
- › [REDACTED]  
[REDACTED]  
[REDACTED]  
[REDACTED]
- › **Sophia Jantomaso**  
Language as Illumination
- › **Micah Syswerda**  
Development of a New Undergraduate Organic Chemistry Laboratory Experiment for Enhancing the Understanding of Chirality





# MONDAY, APRIL 17

Noon–4 p.m.

**JFL Terrace Conference Room A/B, Active Learning Classroom,  
Scholars Lounge, JFL 300**

Oral Presentations: Undergraduate and Graduate

› **Rachel Held**

SMSS, Gaming, Social Media, and Cyber Trafficking

*Terrace Conference Room B – Noon .*

› **Eden Alley**

The Priority Patient in Maternal/Fetal Conflict

*Active Learning Classroom – Noon*

› **Hope Dornfeld**

Songs of Sorrow, Hope, and Praise: Toward a Historical Analysis of  
Negro Spirituals

*Scholars Lounge – Noon*

› **Julia Priftis**

Understanding Military Attachment Regarding Deployment and  
Attachment Theory

*JFL 300 – Noon*

› **Hannah Grace Shirley**

Arnolfini Double Portrait Research Intensive

*Terrace Conference Room A – 12:30 p.m.*

› **Julia Booker, Anna Ponder**

Improving Cultural Competence in the Nurse to Reduce Adverse Patient  
Events

*Terrace Conference Room B – 12:30 p.m.*

› **Elizabeth Mathews**

The Baconian Ethics of Psychosurgery

*Active Learning Classroom – 12:30 p.m.*

› **Theresa Fail**

The Significance of Mourning Wear and Customs During the Civil War

*Scholars Lounge – 12:30 p.m.*

› **Victoria Akyea**

Maternal Mortality Reimagined: Saving Lives Through Data  
Transparency, Disaggregation, and Context

*JFL 300 – 12:30 p.m.*

› **Katherine Larson**

Alvin York: Life of a Peacemaker

*Terrace Conference Room A – 1 p.m.*

› **Gracyn Wagner**

Morality of Restraint Use in Medicine: A Literature Review and Ethical  
Application

*Terrace Conference Room B – 1 p.m.*



# MONDAY, APRIL 17

10 a.m.–  
4 p.m.

**JFL Terrace Conference Room A/B, Active Learning Classroom,  
Scholars Lounge, JFL 300**

Oral Presentations: Undergraduate and Graduate

- › **Deanna Eddy**  
Childhood Sexual Abuse and Adult Relationships: Spiritual Struggles  
and Acceptance of God's Love  
*Active Learning Classroom – 1 p.m.*
- › **David Sokoyebomi Oluwafemi Abafi, Laura Frable**  
Oral and Dental Health of College Students on a Private University  
Campus  
*Scholars Lounge – 1 p.m.*
- › **Mark Lawton**  
Dissecting the Anatomy of the Cozy Mystery Genre: To Create an  
Unforgettable Cozy Mystery  
*JFL 300 – 1 p.m.*
- › **Stephanie Yuen**  
Empathy for the Apathetic  
*Terrace Conference Room A – 1:30 p.m.*
- › **Colleen Murphy**  
Comprehensible Input as a Language Learning Strategy Among Heritage  
Language Learners in the Spanish Classroom  
*Terrace Conference Room B – 1:30 p.m.*
- › **Kerbie Marc, Louis Alvey, Sharon Beatty**  
Blurred Lines: Developing My Professional and Personal Self as a CES  
Doc Student  
*Active Learning Classroom – 1:30 p.m.*
- › **Titus Schurter**  
An Analysis of Judicial Activism and the Conservative Response  
*Terrace Conference Room A – 2 p.m.*
- › **Emmalene Sotomayor**  
Language Anxiety and Motivation: Higher Education International  
Students' Experiences  
*Terrace Conference Room B – 2 p.m.*
- › **Kerbie Marc, Chele Weiglein, Rhonda Gaston**  
Navigating a PhD Program in the Middle of Chaos: A CES Doc Student  
Reflection  
*Active Learning Classroom – 2 p.m.*
- › **Kenneth Powell**  
Inclusions Between Classes of Multilinear Ap Weight Functions  
*Scholars Lounge – 2 p.m.*
- › **Chanel Grate, Zachary Clinton**  
Activate the Advocate: Empowering Students to Become Advocates  
Throughout the Educational Process  
*JFL 300 – 2 p.m.*



# MONDAY, APRIL 17

10 a.m.–  
4 p.m.

**JFL Terrace Conference Room A/B, Active Learning Classroom,  
Scholars Lounge, JFL 300**

Oral Presentations: Undergraduate and Graduate

- › **Lindsey Anton**  
A Case Study Analysis of Medical Gaslighting Among Female Patients  
*Terrace Conference Room A – 2:30 p.m.*
- › **Catherine McElroy**  
Recognizing the Unique Health Care Needs of Pregnant Female Afghan Refugees  
*Terrace Conference Room B – 2:30 p.m.*
- › **Monique Barber**  
Near Death: Shame and Stigma Among Survivors of Overdose  
*Active Learning Classroom – 2:30 p.m.*
- › **Issac Hanna**  
The McEliece Cryptosystem as a Solution to the Post-Quantum Cryptographic Problem  
*Scholar's Lounge – 2:30 p.m.*
- › **Jasmin Andrews**  
The Contradictory Effect of the Strong Black Woman Trope in the Media  
*JFL 300 – 2:30 p.m.*
- › **Sophia Jantomaso**  
Language as Illumination  
*Terrace Conference Room B – 3 p.m.*
- › **Olaoluwa Apata**  
A Critical Analysis of Thomas Oord's Open Theism and Theodicy  
*Active Learning Classroom – 3 p.m.*
- › **Temitope Omowunmi Alao Sanni**  
Hand Hygiene Clubs as an Opportunity for Improving Water, Sanitation, and Hygiene (WASH) Among School Children in Ilaje Community, Lagos, Nigeria.  
*JFL 300 – 3 p.m.*
- › [REDACTED]  
[REDACTED]  
*Terrace Conference Room B – 3:30 p.m.*
- › **Allison Armstrong**  
The Relationship of Moral Distress on Burnout Among Veterinary Nurses  
*JFL 300 – 3:30 p.m.*

## TUESDAY, APRIL 18

9:45–  
10:15 a.m.

### DeMoss Grand Lobby

Aviation Safety Forum, Safety Culture Keynote

› **Mr. Glenn Grubb, VP Safety, JAARS**

9:45 a.m.–  
5:00 p.m.

### DeMoss Grand Lobby

Aviation Safety Forum, Student Presentations

11:15–  
11:30 a.m.

### DeMoss Grand Lobby

Aviation Safety Forum, Safety Culture Briefing

› **Mr. Scott Trepinski, VP Safety, Envoy Airlines**

12:45–  
1:15 p.m.

### DeMoss Grand Lobby

Safety Culture Discussion

› **Mr. Glenn Grubb, JAARS**

› **Mr. Scott Trepinski, Envoy Airlines**

› **Dr. Mitch Morrison, School of Aeronautics**

› **Hosted by Mr. Andrew Walton**

10 a.m.–  
4 p.m.

### JFL Terrace Conference Room A/B, Active Learning Classroom, Scholars Lounge

Oral Presentations: Undergraduate and Graduate

› **Rachel Held**

Adverse Childhood Experiences and College Major

*Terrace Conference Room A – 10 a.m.*

› **Samuel Scott**

Position and Energy Controlled Impact Treatment for Increasing  
Strength and Ductility in Stainless Steel

*Active Learning Classroom – 10 a.m.*

› **Unbi Choi**

The Suggestion of Reconciliation and Alliance Relationship in the future  
between North Korea and the United States, and its Christian role

*Scholars Lounge – 10 a.m.*

› **Kimberly Johnson**

Health and Nutrition Literacy of Students in Health Science Majors at  
Liberty University

*Terrace Conference Room A – 10:30 a.m.*

› **Audrey Thomas**

Toxic Rhetoric of the Online Incel Culture

*Terrace Conference Room B – 10:30 a.m.*



# TUESDAY, APRIL 18

10 a.m.–  
4 p.m.

## JFL Terrace Conference Room A/B, Active Learning Classroom, Scholars Lounge

Oral Presentations: Undergraduate and Graduate

- › **Manuel Figueroa Gomez, Daniel Kenney**  
Spectral Fatigue Behavior of AZ31 Magnesium During Variable Loading  
*Active Learning Classroom – 10:30 a.m.*
- › **Seth Sexton**  
A War of Many Victims: The Cartel Crises in Mexico  
*Scholars Lounge – 10:30 a.m.*
- › **Grace Sibert**  
Empowering Community Health Workers in Guatemala  
*Terrace Conference Room A – 11 a.m.*
- › **Sharon Abimbola Olowoyo, Ayooluwa Gideon Olowoyo, Coralie Eka Mugenga, Glodi Bakangelaka Bokanya, Nikito Gurung, Oluwatosin Marylyn Oduneye**  
County-Level Trends and Potential Disparities in the Suicide Rates in Virginia  
*Terrace Conference Room B – 11 a.m.*
- › **Elijah Yoder**  
Implementation of Complex Low-Density Polyethylene Chemistry into Rigorous Computational Fluid Dynamics Model  
*Active Learning Classroom – 11 a.m.*
- › **Victoria Gunther, Abbie Hopson, Carly Malocsay, Caroline Smith, Melissa Partridge, Patrick Mosley**  
A Study Among College Students with Autism Spectrum Disorder (ASD)  
*Terrace Conference Room A – 11:30 a.m.*
- › **Kate Ndikumagenge**  
Student Expectations of Grace and Compassion from Faculty Based on Their Enneagram  
*Terrace Conference Room B – 11:30 a.m.*
- › **Yiseul Choi**  
Impact of Autonomous Vehicles on Roundabouts at Various Penetration Rates and Autonomous Levels  
*Active Learning Classroom – 11:30 a.m.*
- › **Caitlin Greiner, Faith Mihok, Hannah Murch, Maura McQuillen, Tiffani Jennings**  
Intervention of Mindfulness and Growth Mindset: A Mixed Methods Study  
*Terrace Conference Room A – Noon*

## TUESDAY, APRIL 18

10 a.m.–  
4 p.m.

### JFL Terrace Conference Room A/B, Active Learning Classroom, Scholars Lounge

Oral Presentations: Undergraduate and Graduate

- › **Hannah Murch**  
Mindfulness to Reduce Math Anxiety and Improve Math Performance  
*Terrace Conference Room B – Noon*
- › **Ryan Airesman**  
Realizing the Potential of In-Air Sonar Through Biologically Inspired Hardware and Algorithms  
*Active Learning Classroom – Noon*
- › **Yuhan Yan**  
Side Effects of the COVID-19 Vaccination Among Liberty University Students  
*Scholars Lounge – Noon*
- › **Joshua Zody, Colin Denney, Joseph Engle, Luke Perlot, Nathan Corcimiglia, Noah Clark, Quinn Davidson**  
Determining the Most Suitable Benchmark(s) for the Liberty University Student Asset Management Fund  
*Terrace Conference Room A – 12:30 p.m.*
- › **Savannah Atchison**  
A Survey of Captive Wild and Exotic Animal Training Programs in the Eastern United States  
*Terrace Conference Room B – 12:30 p.m.*
- › **Robert Kacinski, Reid Prichard**  
Computational Model Validation for Upper Airway Turbulent Mixing Study  
*Active Learning Classroom – 12:30 p.m.*
- › **Yuhan Yan**  
Identifying Factors that Influence COVID-19 Vaccine Hesitancy Among Liberty University Undergraduate Students  
*Scholars Lounge – 12:30 p.m.*
- › **Ciminy St. Clair**  
Recommendations for Solving the Problem of Tenth-Grade Gifted Students' Low Scores on the Pennsylvania Value-Added Assessment System at Norwin High School in Pennsylvania  
*JFL 300 – 12:30 p.m.*
- › **Emily Bonus**  
Prevalence of SARS-CoV-2 Antibodies in Liberty University Student Population  
*Terrace Conference Room A – 1 p.m.*
- › **TrishaJean Holt, Alexa Windsor, Edward Cook, Jacob Grissom, Nicole Both, Peyton Bolt**  
The Perception of Loneliness and Its Causes Among College Students: A Mixed-Methods Study





## TUESDAY, APRIL 18

10 a.m.–  
4 p.m.

### JFL Terrace Conference Room A/B, Active Learning Classroom, Scholars Lounge

Oral Presentations: Undergraduate and Graduate

› **Josiah Olsson**

The End of the Azusa Street Revival: William J. Seymour's Marriage to Jennie Evans Moore

*Active Learning Classroom – 1 p.m.*

› **Serafin Matthews**

“Pulp”: H.P. Lovecraft and The Early Twentieth Century Horror Genre

*Scholars Lounge – 1 p.m.*

› **Amanda Verlander**

A Phenomenological Study of Online Undergraduate Student Veterans and the Academic Interactions Affecting Their Success in Higher Education

*JFL 300 – 1 p.m.*

› **Taylor Kiser**

Transitions in Bosnian Womanhood: An Ethnographic Study

*Terrace Conference Room A – 1:30 p.m.*

› **Lindsay Anton**

The Effects of Anti-GMO Rhetoric on Potentially Life-Saving Crops

*Terrace Conference Room B – 1:30 p.m.*

› **Paul Aitchison**

The Use of Crusader Vows Inside and Outside of the Crusades

*Active Learning Classroom – 1:30 p.m.*

› **Jacob Byrd**

A Historical & Theological Analysis of the Canonicity of the Prophecy of 1 Enoch 1:9 in Jude 14-15

*Scholars Lounge – 1:30 p.m.*

› **Nancy Hamilton**

From Dropout To Doctorate

*JFL 300 – 1:30 p.m.*

› **Harold Skinner**

Dangerous Ambition: Character Analysis of Major General Horatio Gates

*Terrace Conference Room A – 2 p.m.*

› **Kathryn Alley**

Paradise and Paradiso: Echoes of a Fortunate Fall

*Terrace Conference Room B – 2 p.m.*

› **Kristen Burgess**

Of Sacrament and Safety: How Two 1970s Home Birth Services Magnified the Power and the Limits of Women's Voices

*Active Learning Classroom – 2 p.m.*

## TUESDAY, APRIL 18

10 a.m.–  
4 p.m.

### JFL Terrace Conference Room A/B, Active Learning Classroom, Scholars Lounge

Oral Presentations: Undergraduate and Graduate

› **Alaura Balsam**

Obsess Without Ceasing: The Misapplication of Scripture Within the OCD Mind

*Scholars Lounge – 2 p.m.*

› **Alyssa Baldwin**

An Exploration into the Experiences of Women Student Veterans and Their Campus Support Utilization: A Phenomenological Study

*JFL 300 – 2 p.m.*

› **Ellie James**

Realizing History Through Fiction: Historical Representation in Storming Heaven

*Terrace Conference Room A – 2:30 p.m.*

› **Liberty Spreitzer**

The Odyssey: A Tale of Culture, Gods, and an Imperfect Hero

*Terrace Conference Room B – 2:30 p.m.*

› **Martina Carroll**

Recommendations to Improve the Process of Professional Development Implementation at the Elementary School Level in a Public School System in Virginia

*Active Learning Classroom – 2:30 p.m.*

› **Ashley Volk**

The Role of Evil in Ephesians 4:11-16 through the lens of Human Learning and the Framework of “Story” by Dan Allender

*Scholars Lounge – 2:30 p.m.*

› **Sonja Howell**

Effectiveness of Instructional Design and Technology in a Non-Traditional Parental

*JFL 300 – 2:30 p.m.*

› **Briana Slaubaugh**

The Golden Age of Islam

*Terrace Conference Room A – 3 p.m.*

› **Abigail Leisure**

Palmer Memorial Institute: Riches, Ruin, and Restoration

*Terrace Conference Room B – 3 p.m.*

› **Christa Stanley**

Returning to School After COVID-19: Relationships Between Parental Stress and Resilience with Children's Mental Health Behaviors

*Active Learning Classroom – 3 p.m.*

› **Chloe Vernon**

A Contentious Intersection: Galileo and the Roman Catholic Church



## TUESDAY, APRIL 18

10 a.m.–  
4 p.m.

### JFL Terrace Conference Room A/B, Active Learning Classroom, Scholars Lounge

Oral Presentations: Undergraduate and Graduate

› **Maximus Marlowe**

The Colonial American Historical Significance of St. David's Church  
*Terrace Conference Room A – 3:30 p.m.*

› **Jordan Swineford-Johnson**

The Experiences of Elementary General Education Teaching Students  
with Mental Health Deficits: A Phenomenological Study

*Active Learning Classroom – 3:30 p.m.*

1–2 p.m.

### JFL 170A

Remote Poster Session: Undergraduate and Graduate

› **Michelle Tonkin**

The Benefits of Natural Nootropics with Cognitive Function

› **Dawn Veltre**

Upskilling in Emergencies: Benefits and Consequences

› **Kira Harkonen**

Kangaroo Care and Improved Physiological Status in Preterm Infants:  
An Integrative Review

1–4 p.m.

### Carter Learning Commons

Theoretical Poster Session: Undergraduate and Graduate

› **Alayna Kent**

Nursing Care of Family Caregivers: Interventions and Considerations  
Regarding Current Issues Facing Family Caregivers of Persons with  
Dementia Relevant to Nursing Practice

› **Michael Jones**

Comparing Balance Training and Strength Training Protocols on  
Individuals with Sub-Acute Ankle Sprains or Chronic Ankle Instability:  
a Critically Appraised Topic

› **William Lee, Logan Allen**

The Effects of Minimalist Footwear on Running Economy: A Critically  
Appraised Topic

› **Abigail Chu**

Virtue Ethics in Nursing: A Review of the Literature

› **Hannah Keeter**

Postpartum Hemorrhage: A Comparison of Viable Treatment Methods  
in Sub-Saharan African Countries

## TUESDAY, APRIL 18

1–4 p.m.

### Carter Learning Commons

Theoretical Poster Session: Undergraduate and Graduate

- › **Katherine Doan**  
Chronic Connective Tissue Injuries and Conditions: An Interpreter's Guide to Working with and Through Musculoskeletal Pain
- › **Sarah Rinn**  
The Impacts of Interpreters on Deaf Patients' Care
- › **Alia Leavitt**  
Effectiveness of American Sign Language Interpreter(s) in English Classrooms on Successful Education of Deaf Students
- › **Adrianna Rought**  
Limited English Proficiency: Addressing the Challenges to Health Care Workers
- › **Emily Etterman**  
Caring for Girls with Precocious Puberty: Nurse's responsibility
- › **Evie Ryan**  
Mandates, Mistrust, and Misconceptions: An Overview of Vaccine Hesitancy
- › **Ashley Sennett**  
The Effects of Blood Flow Restriction (BFR) on Muscle Activation and Hypertrophy in Patients with Chronic Ankle Instability (CAI): A Critically Appraised Topic
- › **Ashton Eicher**  
Effects of Vestibular Rehabilitation in Patients with Dizziness and Balance Problems Following Traumatic Brain Injury: A Critically Appraised Topic
- › **Mikayla Coghill**  
Effects of Blood Flow Restriction Training Compared with Resistance Training on Morphological Changes of the Achilles Tendon: A Critically Appraised Topic
- › **Nicole Earnest**  
Pediatric Post-Intensive Care Syndrome
- › **David Sokoyebomi Oluwafemi Abafi, Chioma Favour Amadi**  
Female Genital Mutilation in Nigeria: A Proposed Ecological Framework
- › **Gloria Ifeoluwa Ogunlade**  
Traffic Congestion and Air Quality in Lagos, Nigeria — A Public Health Perspective
- › **Emily Shively, Maggie Kapczynski**  
How Diet Can Affect Some Preexisting Medical Conditions
- › **Josephine Camiola**  
What Can I Do? A Response to the Vulnerable Elderly



## TUESDAY, APRIL 18

1–4 p.m.

### Carter Learning Commons

Theoretical Poster Session: Undergraduate and Graduate

- › **Ashtyn Spring, Emily Vernon, Mandi Foldesi, Mariah Mizell**  
Effects of Nicotine on Fetal Development: Enhancing Education in Nursing Practice
- › **Austin Love**  
Process Improvement in Appropriate Placement of Patients in Acute Care Settings: An Integrated Literature Review
- › **Hannah Grant**  
Nursing Considerations for Post-Traumatic Amnesia After a Traumatic Brain Injury
- › **Katherine Geer**  
It's Complicated: The Relationship Between Pornography and Mental Health





## WEDNESDAY, APRIL 19

**9:20 a.m.–  
4:05 p.m.**

**DeMoss Grand Lobby**

Aviation Safety Forum, Student Presentations

**9:25–  
9:50 a.m.**

**DeMoss Grand Lobby**

Aviation Safety Forum, Safety Leadership

- › **Ms. Meredith Boardman, Director of Aerospace Safety, Middle Tennessee State University**

**10:30–  
11:15 a.m.**

**DeMoss Grand Lobby**

Aviation Safety Forum, Safety and Faith Panel

- › **Mr. Glenn Grubb, JAARS**
- › **Ms. Meredith Boardman, MTSU**
- › **Mr. Scott Trepinski, Envoy Airlines**
- › **Mr. Andrew Walton, LUSOA**
- › **Hosted by Dr. Mitch Morrison**

**2:30–  
3:30 p.m.**

**DeMoss Grand Lobby**

Safety and Culture Presentation - Q&A

- › **Mr. Glenn Grubb, JAARS**



## WEDNESDAY, APRIL 19

10 a.m.–  
3 p.m.

**JFL Terrace Conference Room A/B, Active Learning Classroom,  
Scholars Lounge**

Oral Presentations: Undergraduate and Graduate

› **Jaden Seman**

Amphibian Fungal Pathogen *Batrachochytrium Dendrobatidis*  
Surveillance in Ecuador and Bedford County, Va.

*Terrace Conference Room B – Noon*

› **Margaret Tyler, Megan McCoy**

Temperature Dependent Esterification of Free Fatty Acids in the  
Presence of Triglycerides

*Active Learning Classroom – Noon*

› **Stephanie Wright**

"The Soundtrack of Our Lives;" John Williams and the Revitalization of  
Classical Orchestration in Film Scores

*Scholars Lounge – Noon*

› **Colin Baker**

THP-1 Monocytes as a Model for the Characterization of Potential  
Agents for Hypersensitization Observed in AGS

*Terrace Conference Room B – 12:30 p.m.*

› **Levi Mailloux**

Structural and Functional Analysis of the Yeast Glucose Transporter  
Hxt1

*Active Learning Classroom – 12:30 p.m.*

› **Sarah Lecik**

Bipolar Chrysalis: A Creative Exploration of Turns in Poetry and the  
Mind

*Scholars Lounge – 12:30 p.m.*

› **Phoebe Bridy, Felice Kho, Yuqi Wang**

Assessment of Histone Acetyltransferase Homologs in *Cryptococcus*  
*Neoformans*

*Terrace Conference Room B – 1 p.m.*

› **Punitha Stevenson**

Champion Training For Two Clinicians Indwelling Urinary Catheter  
Insertion Technique

*Active Learning Classroom – 1 p.m.*

› **Sarah Tate**

The Maid of Gettysburg

*Scholars Lounge – 1 p.m.*

## WEDNESDAY, APRIL 19

Noon–4 p.m.

### School of Music 170, School of Music Concert Hall

Performing Arts Presentations: Undergraduate and Graduate

› **Hope Dornfeld**

Prosody in Friedrich von Flotow's Setting of "The Last Rose of Summer"

*School of Music Concert Hall – 12 p.m.*

› **Aaron Hall**

"Not Alone"

*School of Music Concert Hall – 12:30 p.m.*

› **Jessica Schlagenhaft**

What Goes Un noticed

*School of Music 170 – 12:30 p.m.*

› **Lindsay Anton**

Life in Plastic: Woven Poetry

*School of Music Concert Hall – 1 p.m.*

› **Samuel Harver**

My Shadow Self

*School of Music 170 – 1 p.m.*

› **Jennifer Berkebile, Jaiden Lane**

Muted Group Theory: Granting a Voice to the Voiceless Through "Wicked"

*School of Music Concert Hall – 1:30 p.m.*

› **Abigail Manning**

The Art of a Life Well Spent: An Exploration of Death in a Creative Context

*School of Music 170 – 1:30 p.m.*

› **Lindsay Anton**

Missing Natalie: An Analysis of Grief and Identity

*School of Music Concert Hall – 2 p.m.*

› **Alyssa Davis**

The Journey of Grief: Represented in the Short Film "Spring Day"

*School of Music 170 – 2 p.m.*

› **Eunice Noguerras**

The Puerto Rican Diaspora of the 20th Century and Her People's Response in Song

*School of Music Concert Hall – 2:30 p.m.*

› **Sean Henderson**

The Levels of Storytelling

*School of Music 170 – 2:30 p.m.*

› **Kaycee Lee**

The Body's Reaction to Fear: Fear of the Lord vs. Fear of the World

*School of Music Concert Hall – 3 p.m.*



## WEDNESDAY, APRIL 19

Noon–4 p.m.

### School of Music 170, School of Music Concert Hall

Performing Arts Presentations: Undergraduate and Graduate

› **Brittin Williams**

How Not to Get Away with Murder: Turning Reality into Fiction

*School of Music 170 – 3 p.m.*

› **Jennifer Berkebile**

Speaking Peace in a World of Discriminatory Hate

*School of Music Concert Hall – 3:30 p.m.*

› **Travis Heyer**

Cinematic Arts Education: Taking Informed Initiative to Conquer Creative Opportunities

*School of Music 170 – 3:30 p.m.*

1–2 p.m.

### JFL 170A

Remote Poster Session: Undergraduate and Graduate

› **Virginia Drye**

Knitting Together: The Knitting Army of the First World War

› **Mark Lawton**

Dissecting the Anatomy of the Cozy Mystery Genre: To Create an Unforgettable Cozy Mystery

1–4 p.m.

### Carter Learning Commons

Creative/Artistic and Textual/Investigative and Applied Poster Session: Undergraduate and Graduate

› **Hudson Rice**

“Samson Agonistes” and Milton's Paradoxical Weakness

› **Kathryn Alley**

Paradise and Paradiso: Echoes of a Fortunate Fall

› **Maximus Marlowe**

The Colonial American Historical Significance of St. David's Church

› **Michaela Misantone**

Maternal Metaphors of Yahweh in the Old Testament

› **Bryce Bengtson**

The Prevalence and Effect of Pornography in Culture

› **Ashtyn Spring**

Child Abuse from a Nursing Perspective: Assessment and Implications

## WEDNESDAY, APRIL 19

1–4 p.m.

### Carter Learning Commons

Creative/Artistic and Textual/Investigative and Applied Poster Session:  
Undergraduate and Graduate

- › **Elise Ferenczy**  
Infertility: An Evaluation of Treatment Modalities and Ethical Considerations
- › **Joshua McKinnis**  
Tchaikovsky's Influence on Rachmaninoff's Piano Concertos: Apotheosis, Cadenzas, and Jazz Tendencies
- › **Jaedon Wilkinson**  
Ahab's Soul: An Exploration of the Hero of "Moby-Dick"
- › **Madelyn Junker**  
Thomas Calhoun Walker (1862-1953): The "Black Governor of Virginia"
- › **Reagan Nelson**  
Sofia Palaiologina: Matriarch of the Russian State
- › **Thomas Gillmeister**  
Irish Rebel Music Commemorating the Rebellion of Ireland in 1798: Boolavogue, General Munro, and The Rising of the Moon
- › **Benjamin Erickson**  
A Statistical Comparison of Hebrews to Accepted Pauline and Lukan Corpora
- › **Adele Ericksen**  
The Imperfect, Mystical Longing for God as Seen in the Poetry of Saint Teresa of Ávila
- › **Lauren Benbow, Madison Pettus**  
Stalking: The Gateway Crime and Why It Is Not Taken Seriously Enough
- › **Holly Lawson**  
Galileo and the Church: An Ecological Perspective





## THURSDAY, APRIL 20

10–11 a.m.

**JFL 170 A**

Remote Poster Session: Undergraduate and Graduate

› **Alyssa Baldwin**

An Exploration into the Experiences of Women Student Veterans and Their Campus Support Utilization: A Phenomenological Study

› **Sonja Howell**

Effectiveness of Instructional Design and Technology in a Non-Traditional Parental Program: An Embedded Single Case Study

› **Jon McKinnon, Amanda Strivings, Jessica Scheve**

Horses, Heartmatha, and Honest Reflection: A Novel Approach to Building Resiliency and Wellness in Medical Students

10 a.m.–  
1 p.m.

**Carter Learning Commons**

Applied Poster Session: Undergraduate and Graduate

› **Greta Wilkins**

Development of Graphene Oxide/Carbon Nanofiber Hybrid Structure

› **Samantha Jenne**

Patellar Tendon Tears in Adolescents

› **Yaw Otchere Donkor**

Acute Caffeine Consumption Increases Muscle Force Generation and Reserve During Resistance Exercises

› **Daniel Wilson**

Exploding Banana Puree

› **Reid Prichard**

Undersubscription: An Underutilized Factor in High-Performance Computing

› **Lydianna Notheis, Connor Rothermel, Yiseul Choi**

Analysis of Traffic Operations Performance for Single-Lane and Two-Lane Roundabouts Under Various Priority Rules

› **Grace Sibert**

Empowering Community Health Workers in Guatemala

› **Justa Ndobegang Ewalu, Asonganyi Aminkeng**

Understanding and Addressing the Prevalence of Diarrheal Diseases in Monterrico, Guatemala

› **Latres Bell**

Occupational Therapist Perceptions on How Eye Movement Therapy Supports Working Memory in Children Diagnosed with Attention Deficit Hyperactivity Disorder

## THURSDAY, APRIL 20

10 a.m.–  
1 p.m.

### Carter Learning Commons

Applied Poster Session: Undergraduate and Graduate

- › **Sharon Abimbola Olowoyo, Cara Jansen, Eleftherios Vlahos, Emma Brown, Jubin Kang, Kathryn Outlaw, Kayleen Melvin, Megan Herring, Meghan Sadler, Savannah Monahan**  
Lynchburg HeadStart Vision Screening Initiative
- › **Angielisa Sirard, Jack Gregory, Richard Tuttle**  
The Quest for the Ideal Fluorescent Cell Stain
- › **Allison Clark**  
Cross-cultural Travel: A Study of How International Travel at a Young Age Impacts Communication Skills as an Adult
- › **Manuel Figueroa Gomez, Daniel Kenney**  
Spectral Fatigue Behavior of AZ31 Magnesium During Variable Loading
- › **Amanda McNally**  
Design Considerations of The Aged as It Is Applied to Senior Housing
- › **Nikito Gurung, Chioma Favour Amadi**  
Female Students Reported Greater Side Effects After Receiving the COVID-19 Vaccine at Liberty University
- › **Abigail Kolacz**  
The Effect of Graded Exercise and Exposure on Post-Injury Fear: A Case Study
- › **Elizabeth Doeller**  
An Acute Closed Extensor Hood Rupture of the Metacarpophalangeal Joint in a Male Collegiate Baseball Athlete: A Case Study
- › **Greyson Daviau**  
Effect of Mulligan Mobilization Techniques in addition to Cryokinetics After One Treatment and 24 Hours on NPRS, LEFS, and WBDF Test in High School Athletes with Acute Lateral Ankle Sprains: A Case Series
- › **Michael Worthy**  
Psychosocial Emotional Response to Injury Following Anterior Cruciate Ligament Tear in Female Collegiate Athletes: A Case Series
- › **Raymie Hinkley**  
Dry Needling for Low Back Pain in a Collegiate Wrestler: A Case Study
- › **Sophia Gustafson**  
Therapeutic Interventions for Idiopathic Toe Walking in a Collegiate Basketball Player: A Case Study
- › **Abbigail Leland, Aurora Keefe, Hannah Vollmer, Kristina Geisler, Stephen MacPherson**  
HEXACO Personality Predictors of Self, Victim, and Divine Forgiveness Among Christian College Students



## THURSDAY, APRIL 20

10 a.m.–  
1 p.m.

### Carter Learning Commons

Applied Poster Session: Undergraduate and Graduate

- › **Hannah Bruckner**  
Humility, Empathy, Religious Commitment, and the Forgiveness of Hurt in Close Relationships
- › **Arianna Verbosky**  
Improving the Breathability of a Tracheostomized Patient
- › **Hannah Deter**  
Drone Maneuverability Around Built and Natural Structures: Phase I, Fabrication, and Testing of Mock Environments
- › **Kayden Bingham, Michael Debard**  
Transverse Third-Damper to Improve Suspension Systems for In-wheel Motor Driven Electric Vehicles
- › **Nathan Child**  
Advancing Real-time Brain Computer Interface with Electroencephalography
- › **Quinn Reed**  
Mechanical Properties of Composites Containing Exfoliated-Graphite Epoxy Sensors
- › **Anna Aintablian, Isabelle Perdew**  
Effects of Transfer Credits on Student Success
- › **Austin Farr, Glauber Bernardes Oliveira**  
Examining the Difference in Engagement Between Men's and Women's Instagram Accounts of the Same Sport
- › **Elijah DeYoung, Lydia Buxa**  
Analysis of Fingerprinting Techniques and Comparing the Fingerprints of Twins
- › **Kinsey Painter, Anna Garrett, Chloe Masters, Lydia Weststeijn, Makenzie Mosher, Mariah Mastro**  
An Analysis of Substance Use Perceptions in College Students
- › **TrishaJean Holt, Alexa Windsor, Edward Cook, Jacob Grissom, Nicole Both, Peyton Bolt**  
The Perception of Loneliness and Its Causes Among College Students: A Mixed-Methods Study
- › **Mary Jicha**  
Growth Mindset: Fostering Resilience and Success in the Middle School Mathematics Classroom
- › **Joshua Ingram**  
A Molecular Dynamics Study on Properties of Poly Dimethyl Siloxane with Silica Nanoparticles for Polymer Nanocomposites: Part I, Modeling and Preliminary Simulations

## THURSDAY, APRIL 20

10 a.m.–  
1 p.m.

### Carter Learning Commons

Applied Poster Session: Undergraduate and Graduate

› **Emily Lagerquist**

Green Spaces and Potential Impacts on Mental Health: A Pilot Study Regarding College Students Ability to Cope with Stress and Anxiety

› **David Sokoyebomi Oluwafemi Abafi**

Exploration of Health Outcomes Among Rural and Indigenous Populations in Guatemala

› **Matthew Marcinko**

Design of a Manufacturing Process for the Fabrication and Testing of Electromechanical Transduction in Stretchable Electronics

› **Molly Elder**

The Effects of Caffeine Levels on Muscles Electrical Activity using Electromyography (EMG) Sensors — A Work In Progress

10 a.m.–  
4 p.m.

### JFL Terrace Conference Room A/B, Active Learning Classroom, Scholars Lounge

Oral Presentations: Undergraduate and Graduate

› **Emily Brophy**

Monuments of Memory: Cicero's Rediscovery of Archimedes' Tomb  
*Terrace Conference Room A – 10 a.m.*

› **Jacob Haley, Jala Boyer**

So You Want to Preach the Gospel? A Narrative Paradigm Perspective on Implications for Christian Evangelism from Peter's Sermon in Acts 3:11-26  
*Terrace Conference Room B – 10 a.m.*

› **Abigail Coker**

Sacred Samizdat: The Prevalence and Impact of Self-Publication Among Soviet Evangelicals  
*Active Learning Classroom – 10 a.m.*

› **Bronwyn Merigold Gray**

Worthy or Worthless: A Biblical Theology of Human Value  
*Scholars Lounge – 10 a.m.*

› **Rodney Ford**

A Comparative Analysis of the Lives and Legacies of Booker T. Washington and W.E.B. Dubois  
*Terrace Conference Room B – 10:30 a.m.*

› **Maeghan Eggert**

The Hutu and Tutsi of Rwanda: Brothers to Enemies  
*Active Learning Classroom – 10:30 a.m.*

› **Ryeana Klopfenstein**

Patterns of Domestic Violence and Abuse Within Intimate Relationships  
*Scholars Lounge – 10:30 a.m.*



## THURSDAY, APRIL 20

10 a.m.–  
4 p.m.

JFL Terrace Conference Room A/B, Active Learning Classroom,  
Scholars Lounge

Oral Presentations: Undergraduate and Graduate

- › **Samuel Johnson**  
Deconstructing Petrine Succession: A Historical-Exegetical Inquiry Into Roman Dogma  
*Terrace Conference Room A – 11 a.m.*
- › **Aaron Milkie**  
Freedom, Mystery, and “Kinds of Desire”: The Doctrine of Theosis and Free Will’s Intelligibility Question  
*Terrace Conference Room B – 11 a.m.*
- › **Jennifer Berkebile**  
God and Devil Terms: Adolf Hitler’s Rhetorical Impact Upon the Shifting Mindset of the German People  
*Active Learning Classroom – 11 a.m.*
- › **Paige Farquhar**  
Origins of Evil and Its Grip on the Human Body  
*Scholars Lounge – 11 a.m.*
- › **Caleb Barnes**  
The Netflix Effect  
*Terrace Conference Room A – 11:30 a.m.*
- › **Christopher Rankin**  
By the Light of the Mind: Augustine and Gordon H. Clark on Truth and the Existence of God  
*Terrace Conference Room B – 11:30 a.m.*
- › **Jennifer Berkebile**  
Cognitive Dissonance Theory: Cassian Andor’s Conflicted Personal Self in “Rogue One: A Star Wars Story”  
*Active Learning Classroom – 11:30 a.m.*
- › **Adaline Nolley**  
Women of War: The Role of Female Spies in World War II’s French Resistance  
*Scholars Lounge – 11:30 a.m.*
- › **Aleah Schrock**  
A Question of Defenselessness: The Divergence of German and American Mennonite Communities, 1854-1945  
*Terrace Conference Room A – Noon*
- › **Eric Cashion**  
The Atomic Bomb: A Violent Means of Peacemaking  
*Terrace Conference Room B – Noon*

## THURSDAY, APRIL 20

10 a.m.–  
4 p.m.

**JFL Terrace Conference Room A/B, Active Learning Classroom,  
Scholars Lounge**

Oral Presentations: Undergraduate and Graduate

› **Faith Park**

A Literary Inquiry into Horacio Quiroga's usage of the Oriental in "Las Pantallas de Fátima"

*Active Learning Classroom – Noon*

› **Kaitlyn Misirian**

Martha's Vineyard: The Island with the Flying hands

*Scholars Lounge – Noon*

› **Caleb Stamp**

In the Shadow of the Bomb: How Nuclear Doctrine Shaped and Was Shaped by Dwight D. Eisenhower's Policies

*Terrace Conference Room A – 12:30 p.m.*

› **Evelyn Loftin**

In the Absence of Tears: Female Prostitution in the Holocaust

*Terrace Conference Room B – 12:30 p.m.*

› **Mackenzie Casey**

The Globalization of Mexican Cartels: How Mexico and the U.S. Governments Have Fallen Two Steps Behind

*Active Learning Classroom – 12:30 p.m.*

› **Stephanie Wright**

Torn Between the "Creeds of the Devil": The German-Finnish Co-Belligerency in World War II

*Scholars Lounge – 12:30 p.m.*

› **Luke Walsh, Amelia Thomas, Annalisa Stoll, Briana Slaubaugh, John Chevere, Natasha Leininger, Paul Jang**

The ABC of Christian Missionary Work

*Terrace Conference Room A – 1 p.m.*

› **Domenica Jones**

How a Painter Influenced the Growth of the Pink Tide in Ecuador

*Terrace Conference Room B – 1 p.m.*

› **Katherine Bechter**

God in Harlem: Religious Symbolism in "Sonny's Blues"

*Scholars Lounge – 1 p.m.*

› **Steven Sullivan**

The Instability of Fortunes: American Expansion Westward by the Conquering of the Trans-Appalachian Frontier

*Terrace Conference Room A – 1:30 p.m.*





## THURSDAY, APRIL 20

10 a.m.–  
4 p.m.

### JFL Terrace Conference Room A/B, Active Learning Classroom, Scholars Lounge

Oral Presentations: Undergraduate and Graduate

› **Schuyler Ogden**

Religious Foundations: The Educational and Conceptual Designs of the  
Founding of Mr. Jefferson's University

*Terrace Conference Room B – 3 p.m.*

› **Riley George**

Can Feminism and Christianity Coexist According to 40 Christian  
Women?

*Scholars Lounge – 1:30 p.m.*

1–4 p.m.

### JFL Terrace Conference Room

3MT Competition: Undergraduate and Graduate

#### Undergraduate

› **Aaron Beckley**

Microstructure Characterization of AZ31 Under Strain

› **Bryce Bengtson**

The Prevalence and Effect of Pornography in Culture

› **Xian Wei Hah**

Inside Out Apologetics: Engaging Cultural Narratives in Malaysia

› **Adam Maroni**

The Predicting and Modelling of Commonly used Structural Steels  
Under Cyclic Loading

› **Grace Spade**

CRISPR: The Double-Edged Sword of Genetic Engineering

› **Chloe Vernon**

Synthesis and Characterization of Some Disubstituted Cyclopentadienyl  
Rhenium Complexes as Potential Candidates in Semiconductive  
Materials

## THURSDAY, APRIL 20

1–4 p.m.

### JFL Terrace Conference Room

3MT Competition: Undergraduate and Graduate

#### Graduate and Doctorate

- › **Joby Anthony III**  
Design Optimization of Shot Peening Process with Multiscale Modeling of Viscoplasticity with Internal State Variable Codes
- › **Olaoluwa Apata**  
A Critical Analysis of Thomas Oord's Open Theism and Theodicy
- › **Colin Baker**  
THP-1 Monocytes as a Model for the Characterization of Potential Agents for Hypersensitization Observed in AGS?
- › **Jacob Byrd**  
A Historical & Theological Analysis of the Canonicity of the Prophecy of 1 Enoch 1:9 in Jude 14-15
- › **Caleb Cassidy**  
Modeling Brain Damage in Football Impacts in Full Body Physics Based Simulations
- › **Abigail Coker**  
Sacred Samizdat: The Prevalence and Impact of Self-Publication Among Soviet Evangelicals
- › **Hope Dornfeld**  
Songs of Sorrow, Hope, and Praise: Toward a Historical Analysis of Negro Spirituals
- › **Irene Hoisington**  
Freedman Founders in Antebellum Virginia: Andrew Holt and the New London African Methodist Episcopal Church
- › **Peyton Holliday**  
Paul J. Rainey: Northeast Mississippi's Hidden Legend
- › **Robert Kacinski**  
Comparison of Internal Mixing Physics for Two Types of Non-Invasive Respiratory Therapy
- › **Anthony Mihok**  
Why Time Management for College Students Is Essential for Goal Setting
- › **Hannah Murch**  
Mindfulness to Reduce Math Anxiety and Improve Math Performance



# THURSDAY, APRIL 20

1–4 p.m.

## JFL Terrace Conference Room

3MT Competition: Undergraduate and Graduate

### Graduate and Doctorate

› **Kate Ndikumagenge**

Student Expectations of Grace and Compassion from Faculty Based on Their Enneagram

› **Isaiah Parker**

Liminal Space Theology and the Problem of Divine Hiddenness

› **Lillianna Wright**

Man Wants to Love Mankind: Disability and the Inadequacy of England's Modern Institutions in E.M. Forster's "The Longest Journey"

› **Stephanie Wright**

Piece of Driftwood, A Riverboat, or A Nazi Collaborator? Finland in World War II

› **Elijah Yoder**

Hot Spots: Quantifying Risk for Reactor Failure and a Measure for the Validity of the Lumped Capacitance Assumption

## JURIED ARTS

The following students submitted Juried Arts pieces for Research Week. If you would like to participate in the Juried Arts “People's Choice” awards, view the winners and instructions on how to vote on the big screens in JFL or DeMoss.

- › **Lauren Booth**  
Artistic and Cultural Impacts of Impressionism
- › **Hannah Carroll**  
Guardian Creature Sculpture
- › **Calian Chambers**  
Your Kingdom Come: Heaven as Described by Its Creator
- › **Reyna Collazo**  
The House of Our Gods
- › **Kaitlyn Gracie**  
Beautiful Butterflies
- › **Alexandria Hamlin**  
London's Handwriting: The Typeface of Public Transportation
- › **Rachel Hughes**  
Canine Conquests
- › **Isabella Kosiba**  
Bioluminescent Jellyfish
- › **Sebastian Lammers**  
Depravity of the Abyss: Feeding Your Spirit
- › **Aunna Leach**  
This Dance Has No Steps
- › **Aunna Leach**  
Fearfully and Wonderfully Made
- › **Aunna Leach**  
Trash Can Be Treasure
- › **Cassandra Poorman**  
The Rowboating Row-Bot in Existential Crisis
- › **Amanda Solomon**  
Eternal
- › **Amanda Solomon, Audrey Ingersoll**  
Resin Coasters
- › **Jennifer Trahant**  
Droidaken Hollow
- › **Francesca Yenovkian**  
A Hidden Language



## RECOGNITION OF JUDGES

We would like to extend a special thank you to all of our faculty judges. The success of this event would not be possible without your willingness to volunteer your time to our students.

- › Oswald Attin
- › Alexandra Barnett
- › Bruce Bell
- › Shawn Bielicki
- › Stephanie Blankenship
- › Timothy Brophy
- › Tammy Brown
- › Danny Carrales
- › Alisha Castaneda
- › Jamaica Conner
- › Nancy DeJarnette
- › Thomas Doss
- › Virginia Dow
- › Jodi Duncan
- › John Dunkle
- › Kathryn Eckler
- › Mona Fazzina
- › Ben Forrest
- › Michael Gibson
- › Jonathan Giles
- › Cory Goff
- › Cynthia Goodrich
- › Linnaya Graf
- › Kendra Guillen
- › Mark Hamilton
- › Scott Hayes
- › Connie Hecker
- › Mary Highton
- › Stephen Hobson
- › Melanie Hudson
- › Julia Inglis
- › Young-Man Kim
- › Mike Kipreos
- › Emily Knowles
- › Sharon Kopis
- › Yingguang Liu
- › Marie Mallory
- › Edward Martin
- › Stephen Mason
- › Jeremy McGinniss
- › Kimberly Mitchell
- › David Ochabski
- › Folashade Odedina
- › Sheri Parmelee
- › Marilyn Peyton
- › Michael Price
- › Catherine Roberts
- › Morgan Roth
- › Cynthia Schimdt
- › Erik Schmitt
- › Rachel Schwedt
- › Christopher Sneeringer
- › Songsu Son
- › Kevin Struble
- › Robert Talley
- › Ashley Tharpe
- › Tracey Turner
- › Nathaniel Valle
- › Andrew Volk
- › Sherri Walker
- › Lew Weider
- › Darren Wu
- › Yan Xie
- › Michael Zamperini

## RESEARCH WEEK ADVISORY BOARD

The Center for Research & Scholarship would like to express special appreciation to the faculty and student members of the Research Week Advisory Board. The expertise of this board guides the application processes, judging criteria and rubrics, and the presentation guidelines to ensure that Research Week is a successful event each year that aligns with the mission of CRS to champion research and scholarship at Liberty University.

- › **Dr. Brianne Friberg**
- › **Dr. Joseph Gigliotti**
- › **Dr. Cindy Goodrich**
- › **Dr. Scott Hayes**
- › **Dr. Gary Isaacs**
- › **Dr. Emily Knowles**
- › **Dr. Hector Medina**
- › **Dr. Gabriel Miller**
- › **Dr. Mitch Morrison**
- › **Dr. Mary Prentice**
- › **Angela Rice**
- › **Dr. David Snead**
- › **Nathaniel Valle**
- › **Dr. Ester Warren**
- › **Dr. Lew Weider**
- › **Dr. Darren Wu**





## RESEARCH WEEK TASK FORCE

The team from the Center for Research & Scholarship would like to sincerely thank the Research Week Task Force for their valuable time and contributions to the success of this venture. We could not execute an academic event of this magnitude without their expertise in planning, logistics, marketing, and academic research. Their support of student research and its dissemination to the larger student body and beyond adds immense value to the Liberty University student experience — for those who present as well as those who attend. Because of their talents and dedication, Research Week, now in its sixth year, has become an established milestone in the Liberty University academic year, and the CRS team would like to extend heartfelt appreciation for their commitment to its excellence.

- › **Rebecca Arocho**
- › **Olivia Bergen**
- › **Kaya Cassell**
- › **Ben Forrest**
- › **Rorie Beth Fredrich**
- › **Mark Hamilton**
- › **Dr. Scott Hayes**
- › **Aaron Malbuff**
- › **Mitch Morrison**
- › **David Ochabski**
- › **Dr. Paul Rumrill**
- › **Summer Sheehan**
- › **Dr. Todd Smith**
- › **Dr. Ester Warren**
- › **Jenny Wilen**
- › **Ben Williamson**
- › **Dr. Darren Wu**







# Passport

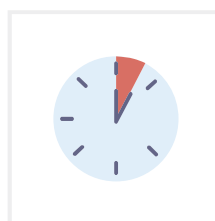
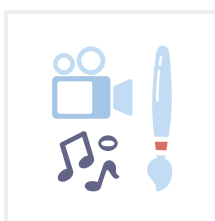
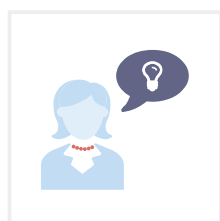
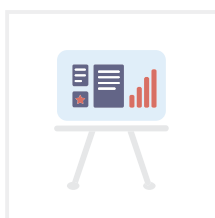
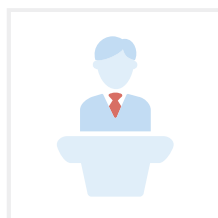
*AirPods Giveaway!*

Attend any 4 types of Research Week events and be entered to win a pair of AirPods!

*Choose 4 to enter:*

- 1) Attend the Keynote Address, Monday, April 17, 10:15 a.m. — hors d'oeuvres served! Ask for sticker at check-in table.
- 2) View a Poster Presentation, Monday-Thursday. See schedule for details. Ask for sticker at check-in table.
- 3) Attend an Oral Presentation, Monday-Thursday. See schedule for details. Ask for sticker at check-in table.
- 4) Attend a Performing Arts Presentation, Wednesday Noon. Ask for sticker at check-in table.
- 5) Attend 3-Minute Thesis Competition, Thursday 1 p.m. Ask for sticker at check-in table.

Place your sticker in the correct box below and return to the main registration table in JFL to be entered to win the AirPods!



## HOW TO VOTE *for* JURIED ARTS PEOPLE'S CHOICE AWARD

Vote in the Juried Arts People's Choice Competition! Go to [Facebook.com/LibertyULibrary](https://www.facebook.com/LibertyULibrary) and like your favorite piece in the Research Week Juried Art photo album. Voting ends on Thursday, April 20, at 4 p.m., so cast your vote today!

NAME: \_\_\_\_\_

EMAIL: \_\_\_\_\_@liberty.edu