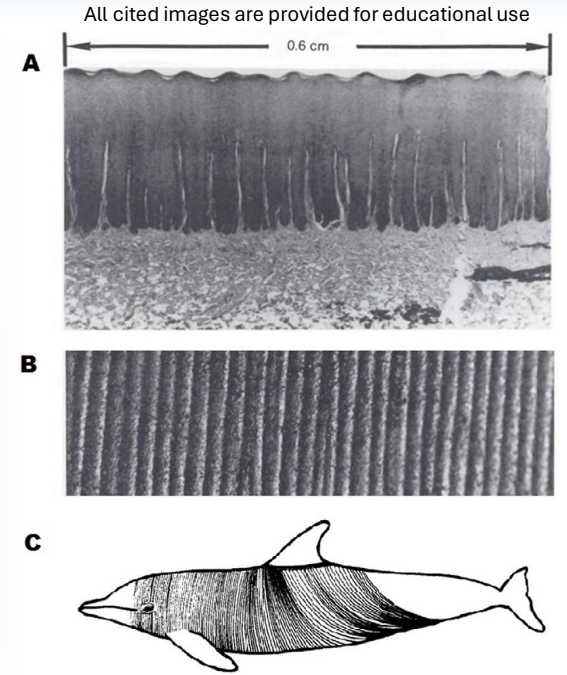
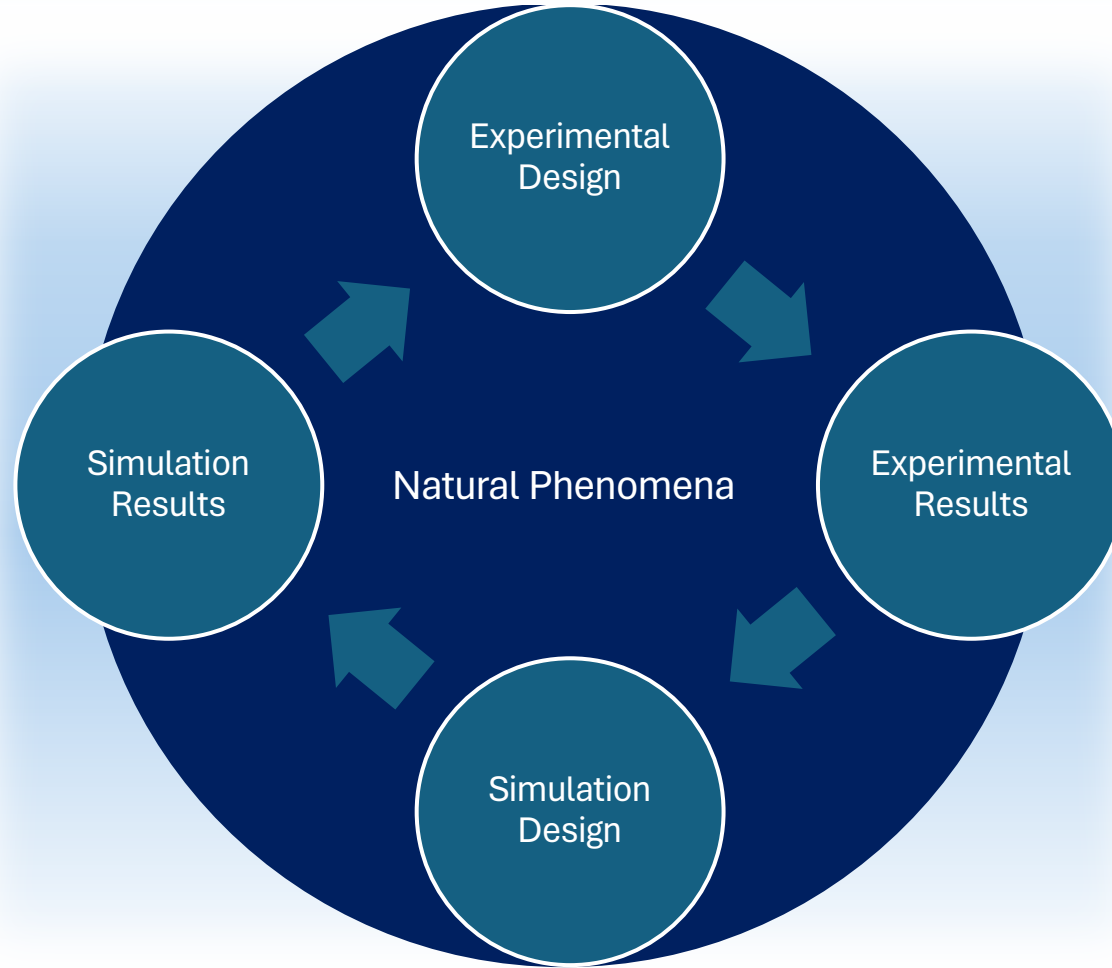
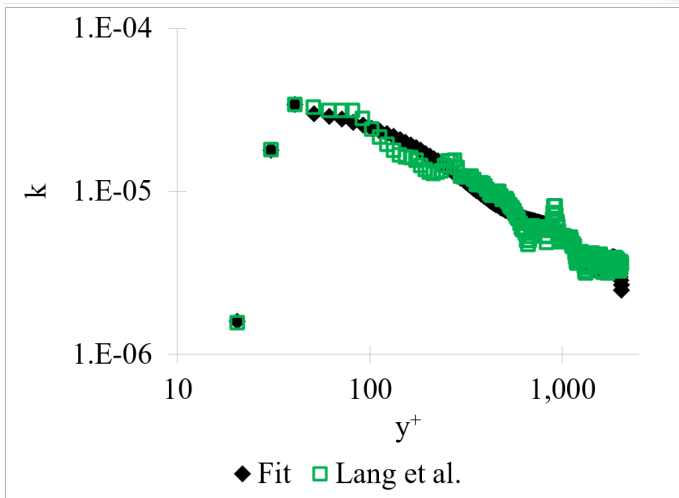
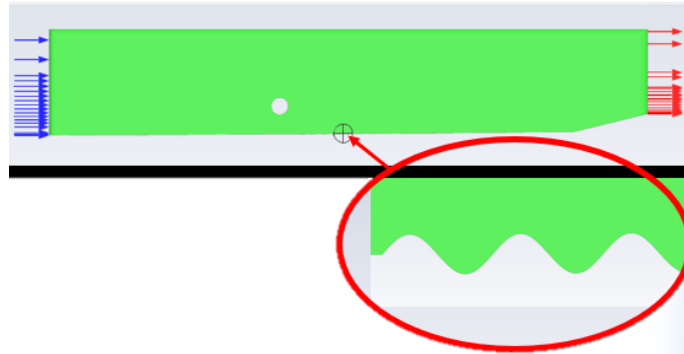
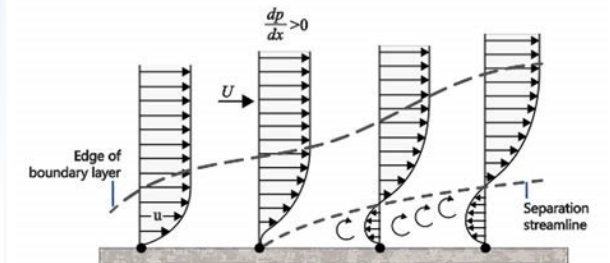




Dolphin Skin | A Bio-Inspired CFD Analysis



Lang, A., Jones, E., & Afroz, F. (2017). Separation control over a grooved surface inspired by dolphin skin. *Bioinspiration & Biomimetics*, 12(2), 026005. <https://doi.org/10.1088/1748-3190/aa5770>



Basic boundary layer Theory. (n.d.). (C) Copyright 2021. https://2021.help.altair.com/2021.2/hwsolvers/acusolve/topics/acusolve/training_manual/basic_boundary_layer_theory_r.htm



LIBERTY UNIVERSITY | SCHOOL of ENGINEERING



College of Engineering