

Domestic Violence within Intimate Relationships

By Ryeana Klopfenstein

Sexual Assault:

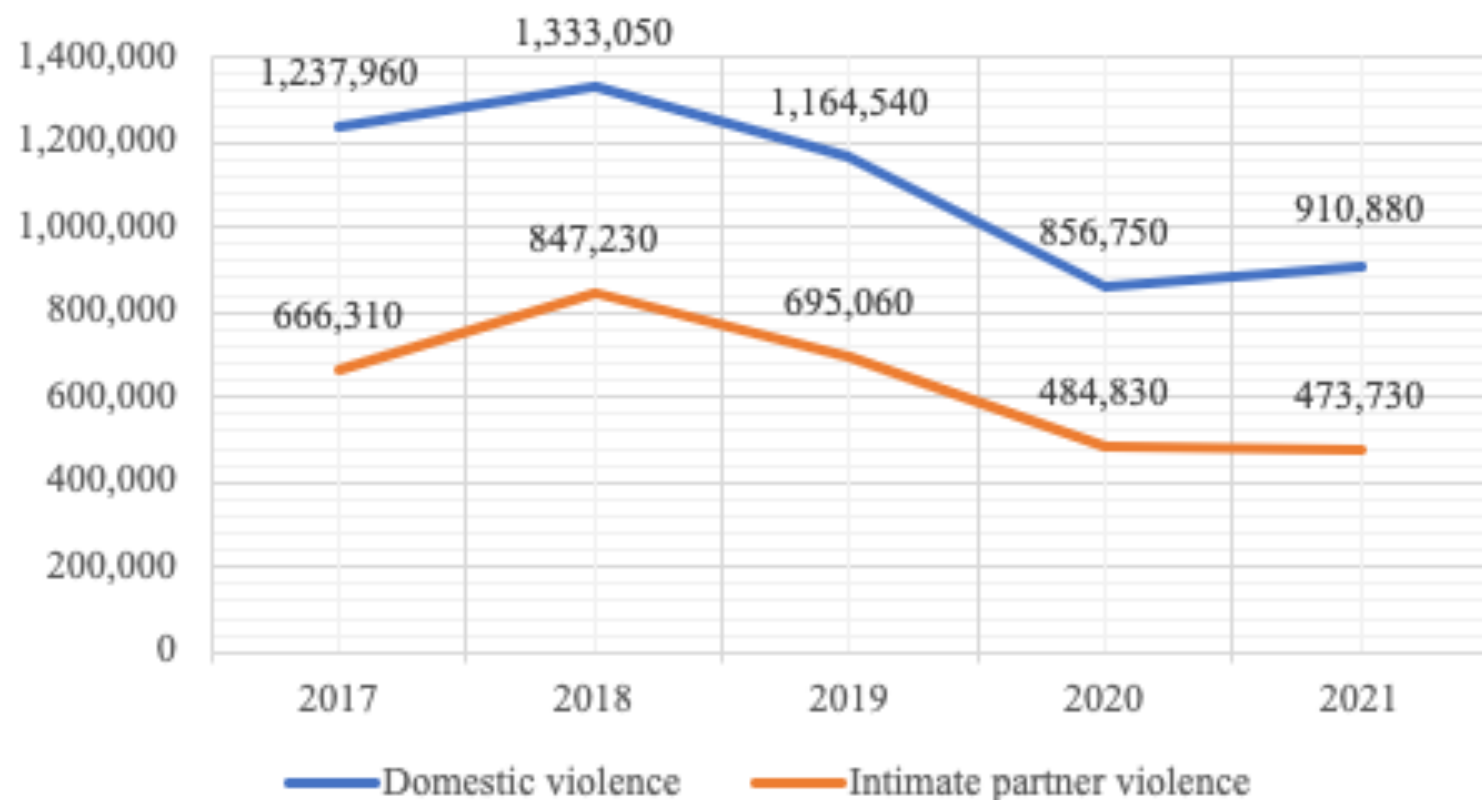
Sexual contact or behavior that occurs without explicit consent of the victim.

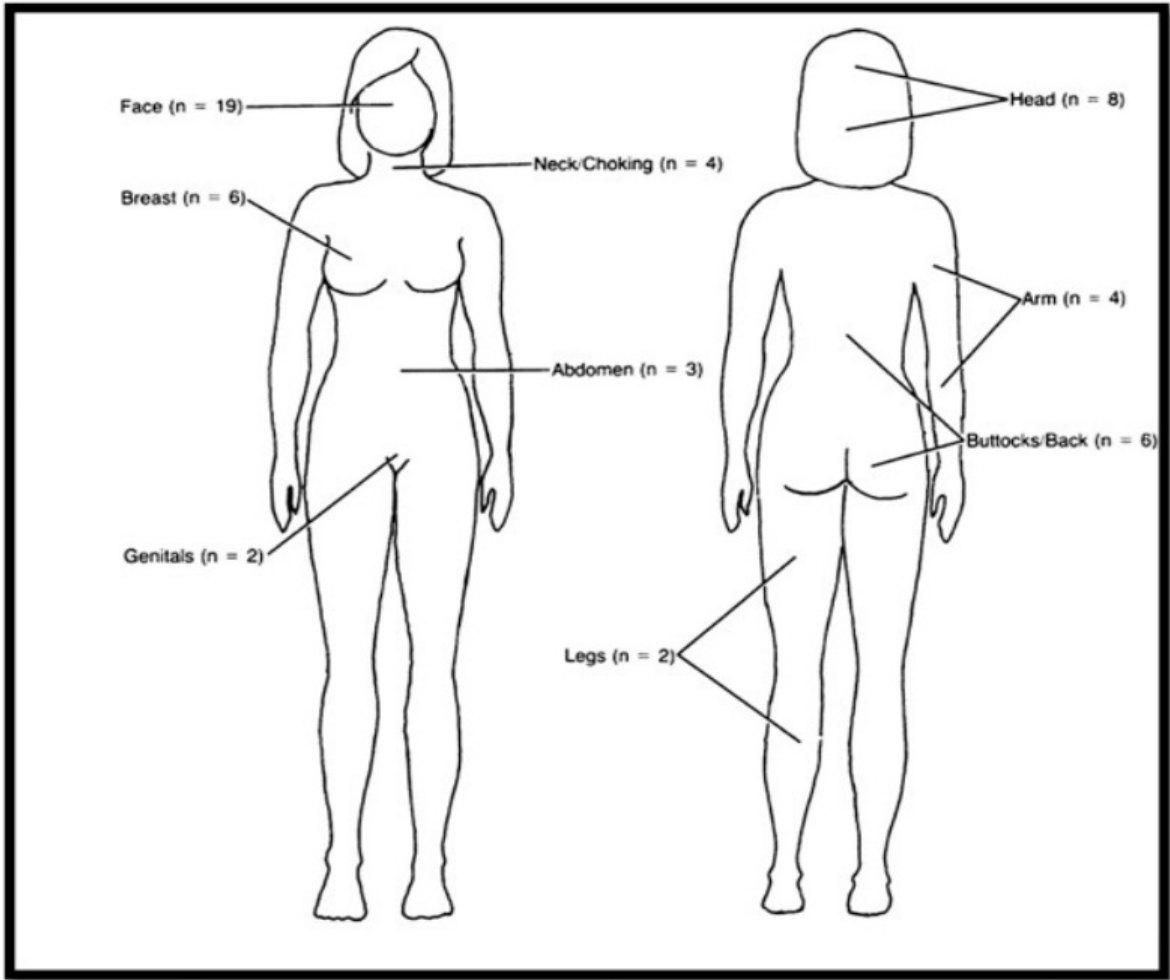
Domestic Violence:

The pattern of abusive behavior in any relationship used by one partner to gain or maintain power and control over another partner.

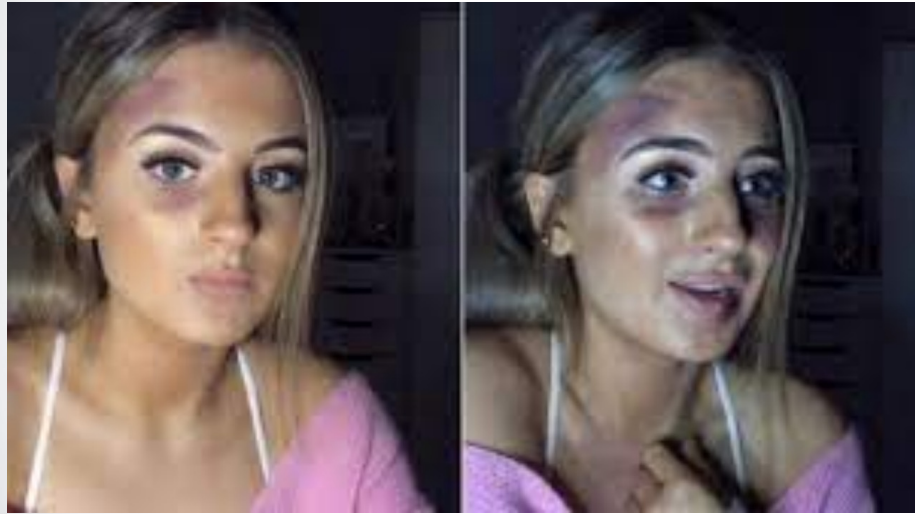


Number of Violent Victimizations, 2017-2021



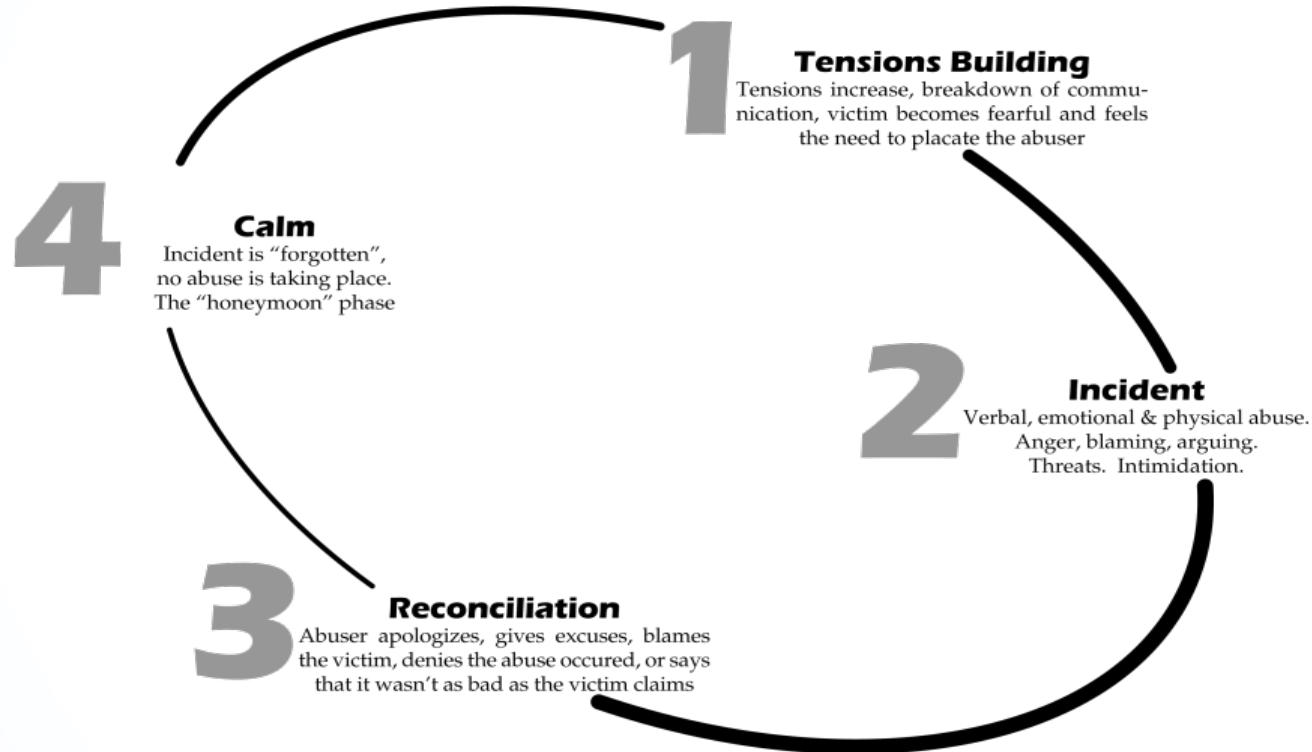


Note. From "Every bone of my body" by Sweet, n.d. retrieved from <https://www.sciencedirect.com/science/article/abs/pii/S0277953614006601>



Note. From "Tik tok teenager's video sparks domestic abuse debate" by Bramwell, n.d. retrieved from <https://www.bbc.com/news/blogs-trending-51007474>

Cycle of Abuse



What Can We Do?

Teach how to report domestic violence/intimate partner violence to the police in school settings



Show positive effects of reporting domestic violence situations