

---

FACS Undergraduate Scholarship

Department of Family and Consumer Sciences

---

4-2014

## Gloria (Love Seat Design)

Lia Serapiglia  
lserapiglia@liberty.edu

Follow this and additional works at: [https://digitalcommons.liberty.edu/facs\\_undergrad\\_schol](https://digitalcommons.liberty.edu/facs_undergrad_schol)



Part of the [Industrial and Product Design Commons](#)

---

### Recommended Citation

Serapiglia, Lia. "Gloria (Love Seat Design)" (2014). FACS Undergraduate Scholarship.  
[http://digitalcommons.liberty.edu/facs\\_undergrad\\_schol/1](http://digitalcommons.liberty.edu/facs_undergrad_schol/1).

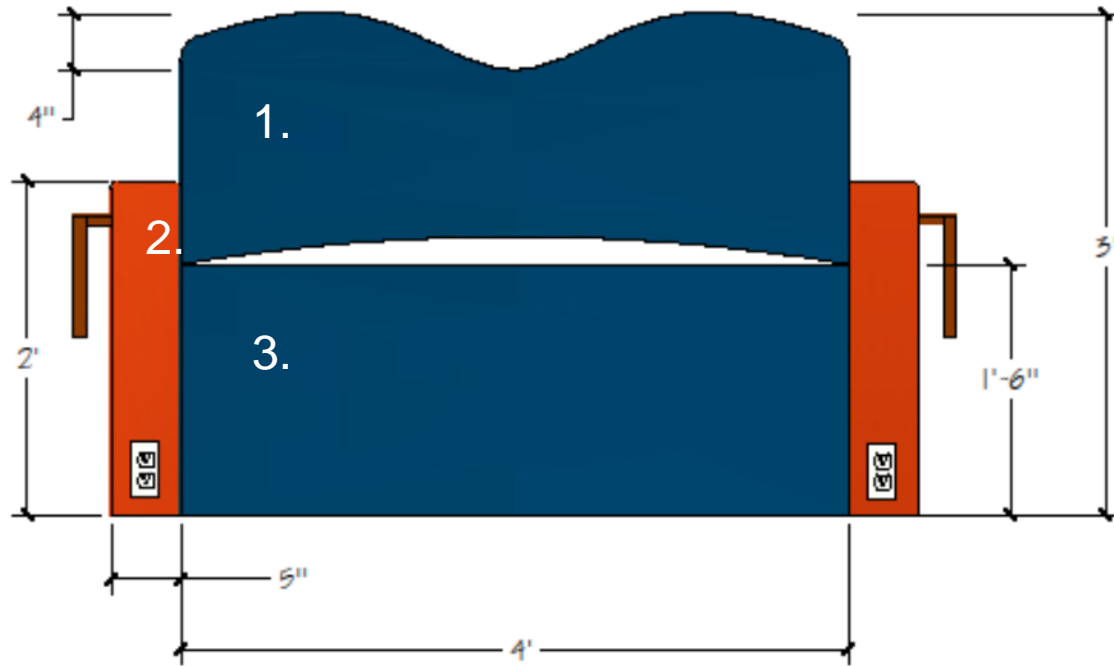
This Article is brought to you for free and open access by the Department of Family and Consumer Sciences at Scholars Crossing. It has been accepted for inclusion in FACS Undergraduate Scholarship by an authorized administrator of Scholars Crossing. For more information, please contact [scholarlycommunications@liberty.edu](mailto:scholarlycommunications@liberty.edu).

Chair Design and Inspirations

**LIA SERAPIGLIA**

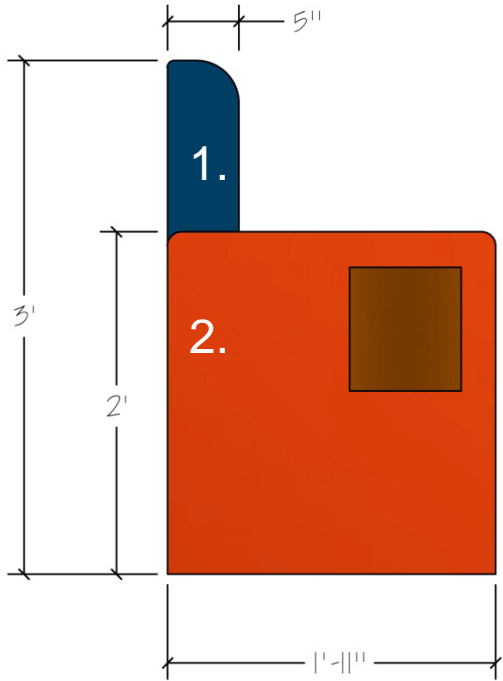
---

# DRAWINGS - FRONT VIEW\*



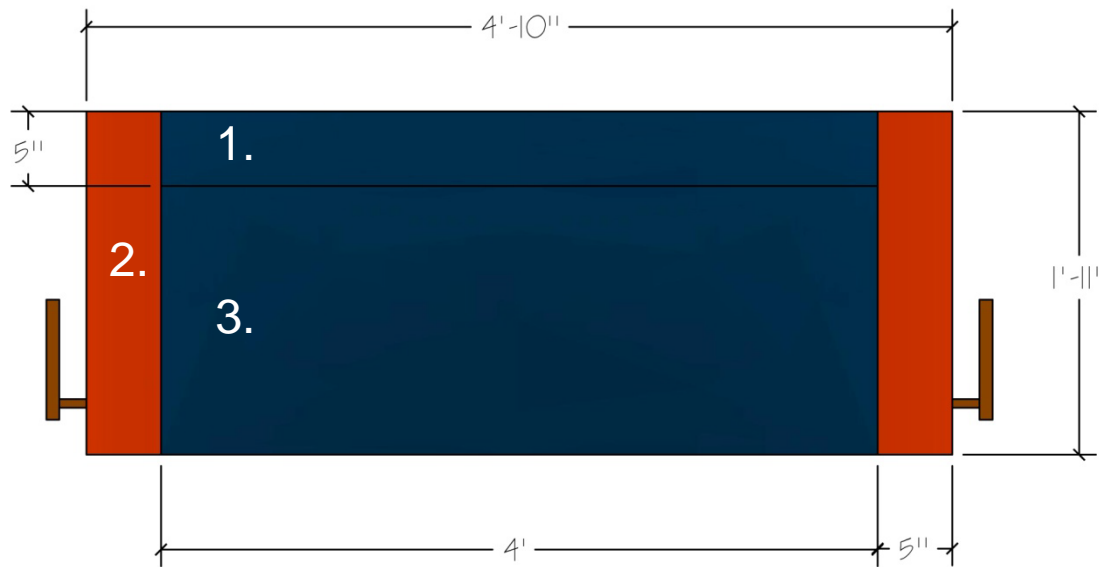
<b>Lia Serapiglia</b>	
HPFI Chair Design Contest	
7/15/13	Front view
Scale: 1" = 1'-0"	
1 of 3	

# DRAWINGS – SIDE VIEW\*



<b>Lia Serapiglia</b>	
HPFI Chair Design Contest	
7/15/13	Side view
Scale: 1" = 1'-0"	
2 of 3	

# DRAWINGS – TOP VIEW\*



Lia Serapiglia	
HPFI Chair Design Contest	
7/15/13	Top view
Scale: 1" = 1' - 0"	
3 of 3	

# INSPIRATIONS

My inspiration for this love seat was the beautiful mountain sunsets we see almost every day at Liberty University. I love how the dark mountains stand out against the brilliant oranges, pinks, and purples of the sky.



# DESIGN

---

I chose to design a loveseat. As previously mentioned, my inspiration was mountain sunsets. I added the curvature of the backrest to resemble the rise and fall of the mountains. While this is a fun design element it also helps to clearly define the two seats of the chair. I chose not to use legs for this piece of furniture as legs would make it easier for things to roll underneath. From my experience as a college student we tend to drop things a lot, and the harder it is for something to get under a piece of furniture the better! As evidenced in the drawing, I have added tablet arms to each side of the loveseat. Many times college students are looking for a place to sit to work on homework or have a quick bite to eat. Having a table makes it much easier to do either of these things. Outlets have also been added to each side of the loveseat to provide an easy and convenient spot to plug in a computer or phone charger. College students are always looking for a seat that has a power outlet close by! The backrest and seat are two separate pieces to allow for the curved opening at the back. This opening is there to allow for easy cleaning and brushing off of crumbs.

# CONSTRUCTION

---

The love seat is four separate pieces that have been screwed together. It is constructed of wood, padded with foam, and then upholstered. I chose to design it this way so that there are no removable cushions. Having a couch or love seat with removable cushions is just inviting things to slip into the crevices and get lost, and dust and crumbs to gather beneath the cushions.



# FABRICS

1. Mayer Fabrics - Fairy Tale Puss 'N Boots

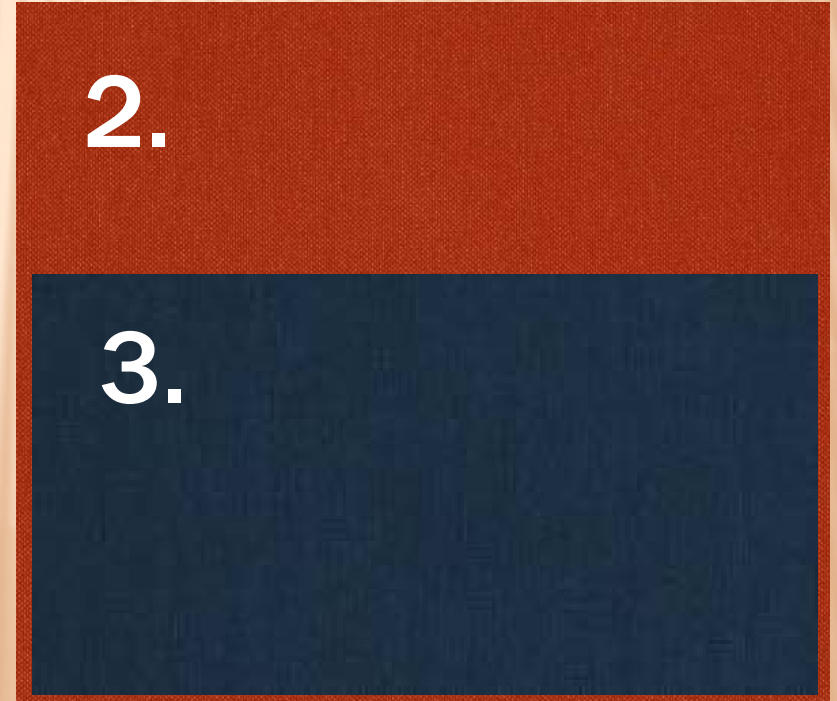
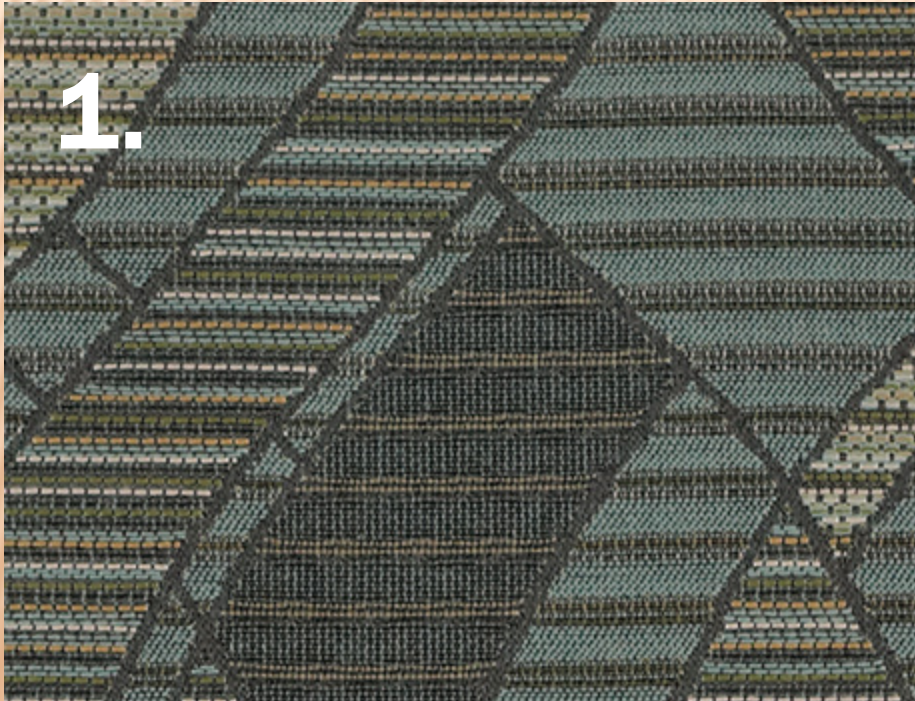
<http://www.mayerfabrics.com/Product.aspx?i=WC963-004>

2. Mayer Fabrics - Silverweave Tangerine

<http://www.mayerfabrics.com/Search.aspx?sKeyword=silverweave>

3. Mayer Fabrics – Silverweave

<http://www.mayerfabrics.com/Search.aspx?sKeyword=silverweav>



My fabrics were selected from Mayer Fabrics. The seat back is Fairy Tales Puss 'N Boots #WC963-004. This fabric corresponds to the curve of the backrest and my idea of mountain inspiration. However, instead of having the pattern run vertically as it does in the examples on the website, I would like it to run horizontally so the curves match the curves of the backrest. The seat is Silverweave Baltic to maintain the dark blue of the mountains but keep a vinyl instead of a fabric on the seat. The arm rests are Silverweave Tangerine. This orange most closely resembled the brilliant orange of the sky at sunset. I thought these colors and fabrics worked well together to create the design I envisioned.

# ENDNOTE

\*ALL DRAWINGS OF THIS LOVESEAT WERE CREATED USING AN AUTODESK EDUCATIONAL PRODUCT.

\*\*THE DRAWINGS IN THIS PRESENTATION MAY NOT BE TO THE CORRECT SCALE. THE ORIGINAL PDF FILES HAVE BEEN ATTACHED SEPARATELY FOR CORRECT SCALE.